

clinell®

Touch-free Hand Disinfection

Wall-mounted kit

SET UP GUIDE



clinell®
Hand Disinfection

**Don't forget ...
to clean your hands regularly**

-  **1** Rub your hands palm to palm
-  **2** Rub your fingertips into opposing palm
-  **3** Rub each thumb in opposing hand

KILLS AT LEAST 99.99%
OF BACTERIA & VIRUSES

Effective against all known viruses

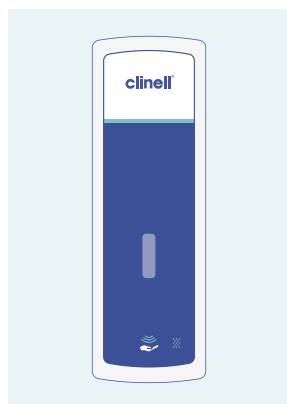
Set up guide

Carton contents

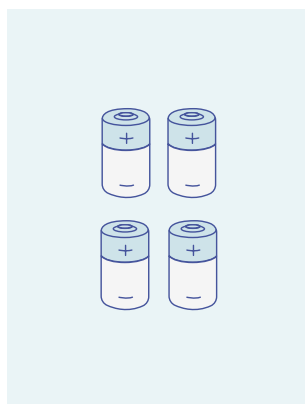
1. Box containing Clinell dispenser unit parts (including dispenser key)
2. Box containing backboard
3. 4 x D batteries
4. Drip tray (optional use)



Backboard



Dispenser



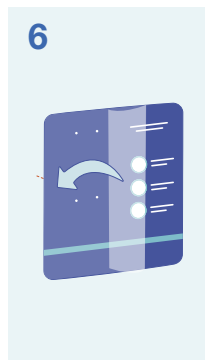
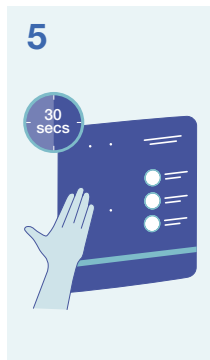
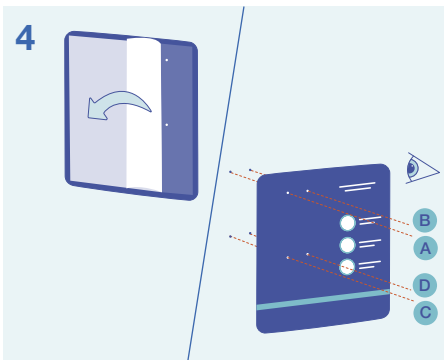
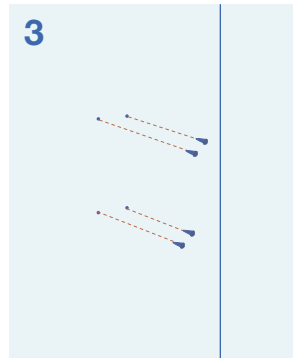
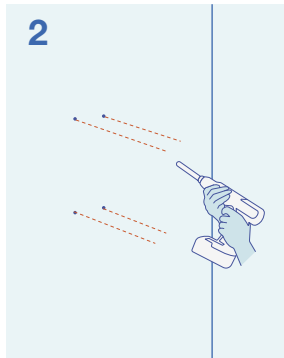
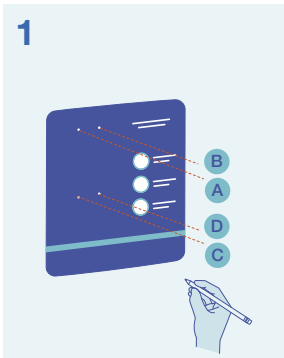
Batteries

Step one

Placement of the backboard

Place backboard against wall in desired location

1. On the wall, mark through four drill holes A, B, C & D with a pencil.
2. Drill holes into the wall according to four marked points.
3. Insert 4 x rawl plugs into drilled holes.
4. Remove adhesive backing from backboard and carefully line up holes A, B, C & D with drill holes.
5. Push backboard firmly against wall for 30 seconds*.
6. Gently peel away protective adhesive on front of backboard.
7. Dispose of all packaging as per local regulations.

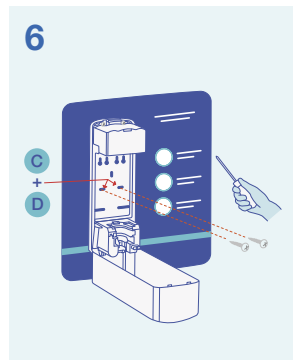
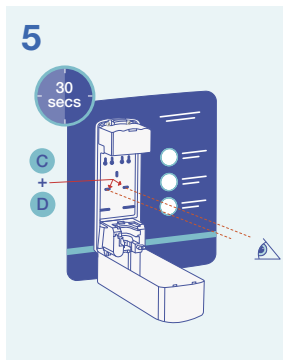
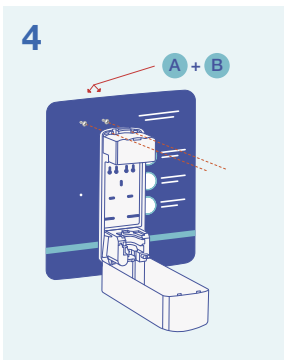
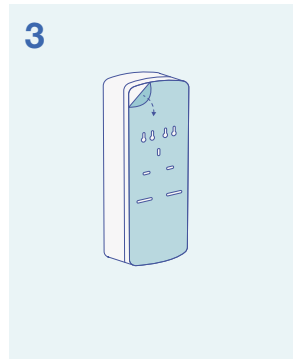
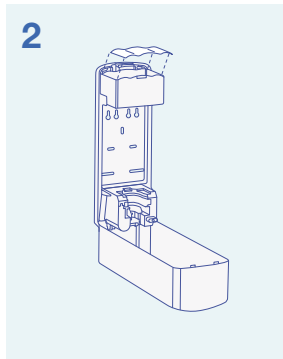
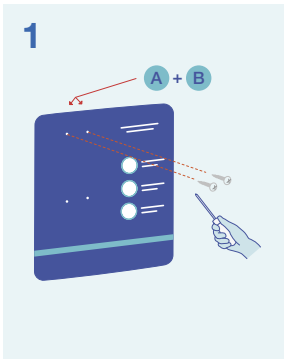


*Caution: Backboard adhesive may damage walls on removal.

Step two

Mounting the dispenser onto the backboard

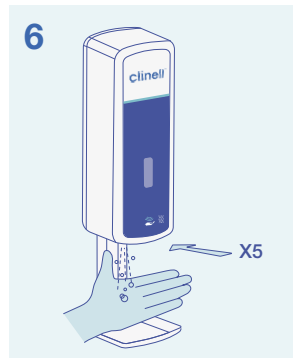
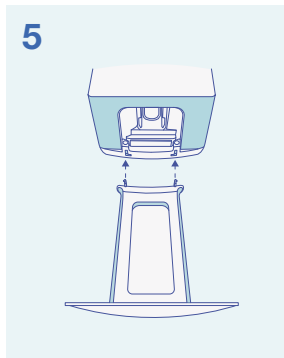
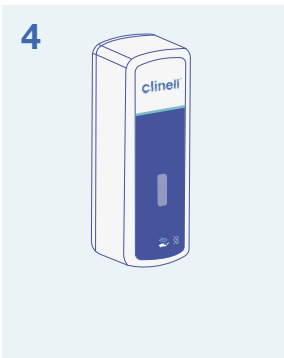
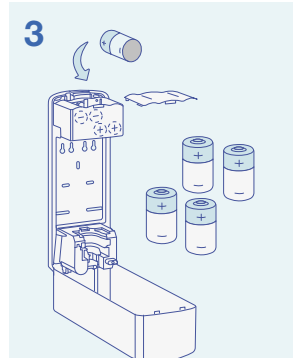
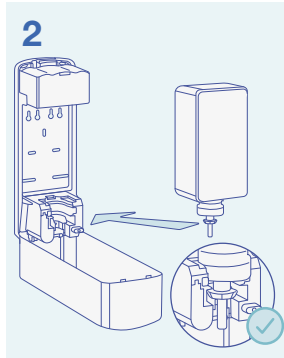
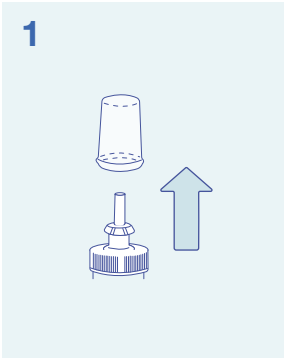
1. Loosely screw 2 x screws through backboard into holes marked A & B.
2. Ensure battery cover is removed from dispenser unit.
3. Unpeel adhesive film from back of dispenser unit.
4. Carefully hook the open dispenser unit onto screws in holes A & B, ensuring unit doesn't stick to backboard.
5. Line up holes C & D with holes in backboard and press unit firmly in position for 30 seconds.
6. Screw 2 x screws through holes C & D into backboard, tighten screws in holes A & B.



Step three

Dispenser set-up

1. Remove cap from gel refill cartridge by pulling the cap firmly.
2. Turn cartridge upside down, ensuring label is facing towards the back of the dispenser unit and click into place.
3. Insert 4 x D batteries and replace battery cover.
4. Close dispenser unit and click shut.
5. Line up drip tray clips and press in the left side, followed by the right side until firmly locked into position.
6. Place hand under dispenser unit multiple times to activate gel (green light signifies unit is in operation).



clinell®

Hand Disinfection



KILLS AT LEAST 99.99%
OF BACTERIA & VIRUSES



SEE

Don't forget
to clean your hands



1



2



3

Effective against all known

Top tip

Place your Clinell Touch-free Hand Disinfection wall mounted dispenser near entrances and coffee/dining areas for maximum compliance.

For further information visit:

www.gamahealthcare.com/hand-disinfection

t ...
regularly

ub your hands
alm to palm

ub your fingertips
to opposing palm

ub each thumb
opposing hand

viruses

©2012 GAMA

JBN210489

GAMA Healthcare Ltd.,

The Maylands Building, Maylands Avenue, Hemel Hempstead, Hertfordshire, HP2 7TG, UK.

T: +44 (0)20 7993 0030 E: info@gamahealthcare.com W: www.gamahealthcare.com

